

Adding Brushes in PaintShop Pro

The simple instructions below will show you how to install and use PaintShop Pro brushes. You can also watch our video tutorial [Using the Brush Tools](#) to see just how easy it is to work with brushes and how they can enhance your photo projects.

After downloading your brush files, it's helpful to get into the habit of storing them in the proper location. This way, they will display in the Brush Tip drop-list. Each brush has two files: a .PspScript file and a .PspBrush file. Browse to the following location to paste **both** of these files in your Brushes folder:

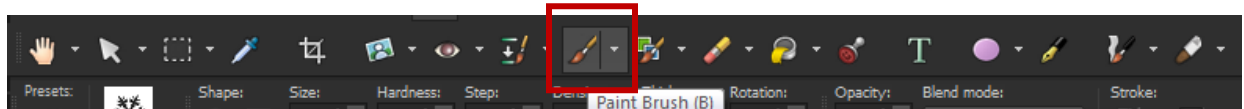
C:\Users\YOURNAME\Documents\Corel PaintShop Pro\2021\Brushes

*If you are using a different version of PaintShop Pro, replace **2021** in the filepath above with your version.*

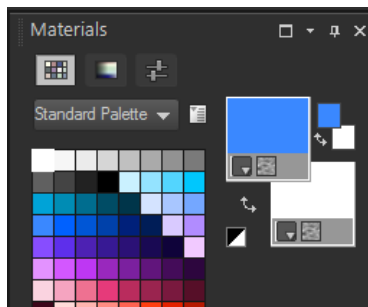
To use a brush:

In the **Edit** workspace,

1. On the **Tools** toolbar, choose a brush tool.

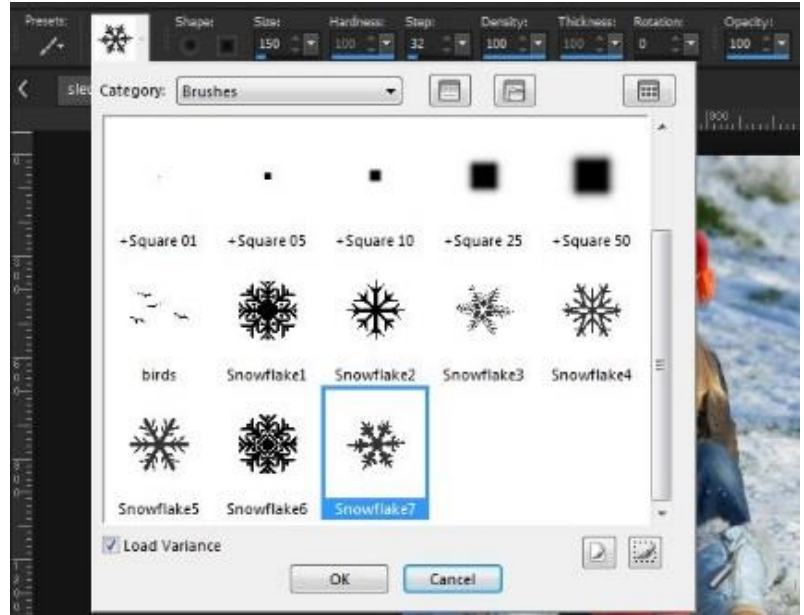


2. On the **Materials** palette, choose the foreground and background colors and materials.



3. On the **Tool Options** palette, choose a preset brush tip from the brush tip drop-list.

4. Specify the brush options, such as shape, size, opacity, hardness, thickness, and rotation.



Now you can start painting! Just click with the brush tip to add to your photo. Try playing with the rotation and opacity for variation.

TIP #1: You can easily resize your brush by holding down the **ALT** key and dragging your mouse up or down.

TIP #2: For more editing flexibility, create a new raster layer first and apply your brush strokes on that new layer. This will allow you to work with the brush images independent from your photo, to resize or move, to add effects, etc.